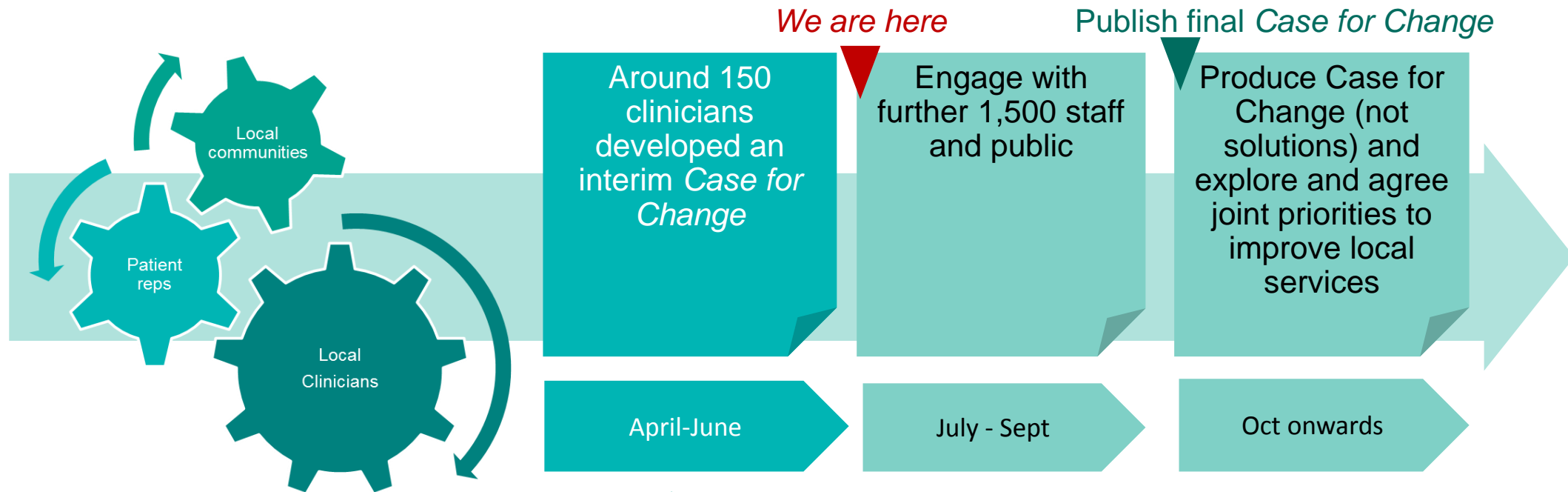


# **Transforming Services, Changing Lives**

## **Interim *Case for Change***

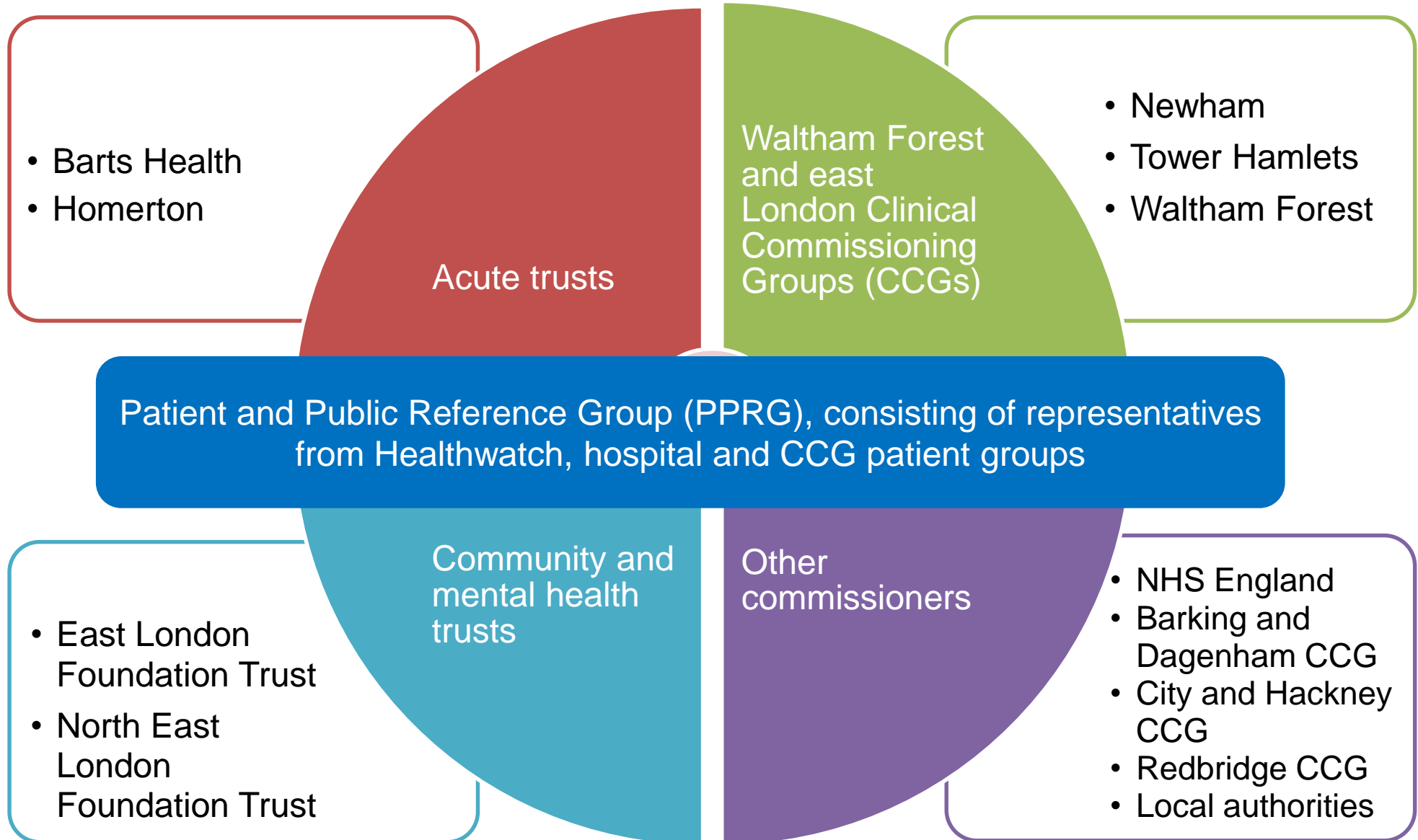
# A journey to improve services for the whole community



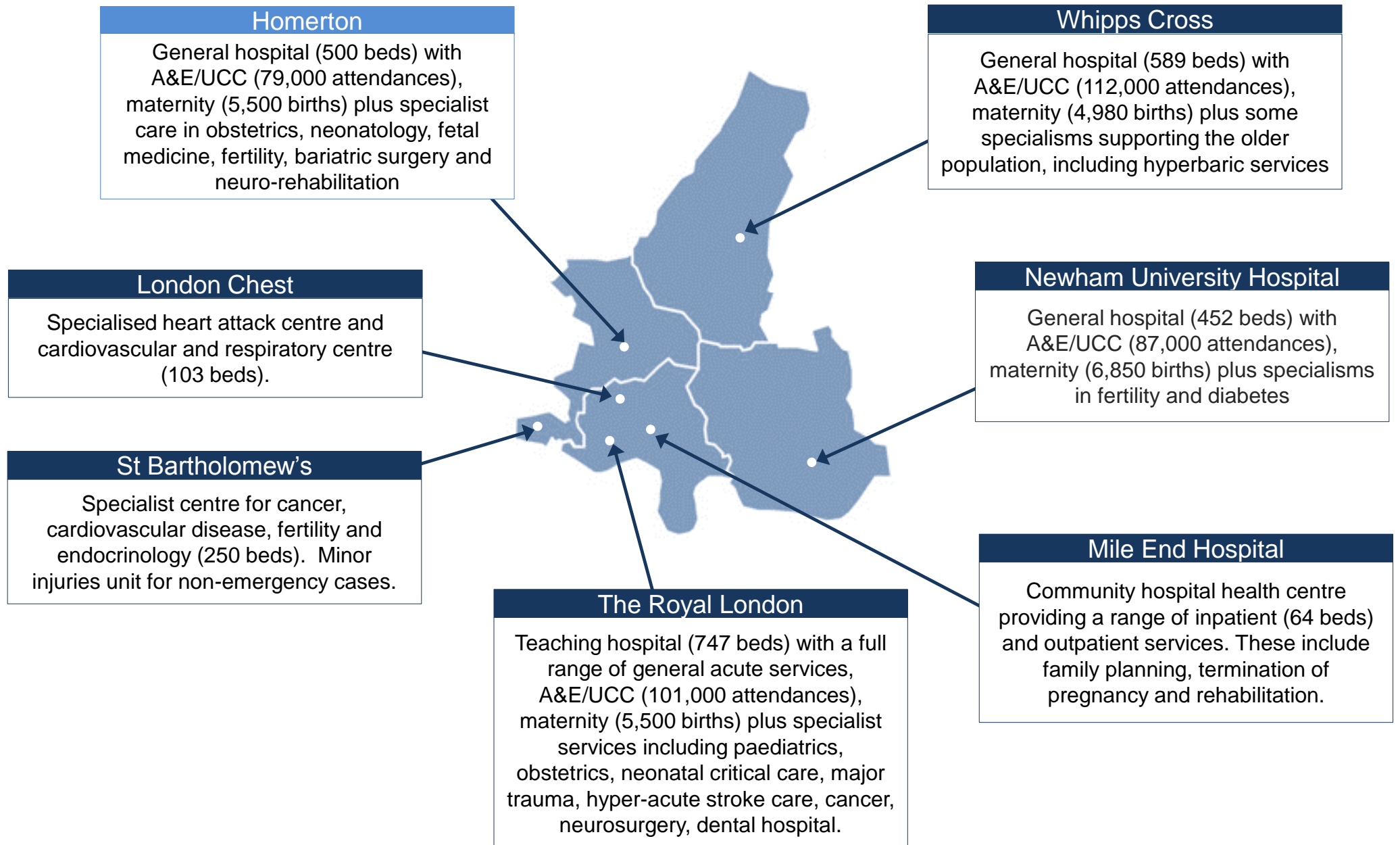
## The programme will:

- describe the current state of services
- identify if change is needed to improve services for patients
- begin to develop a shared vision of how we can improve services

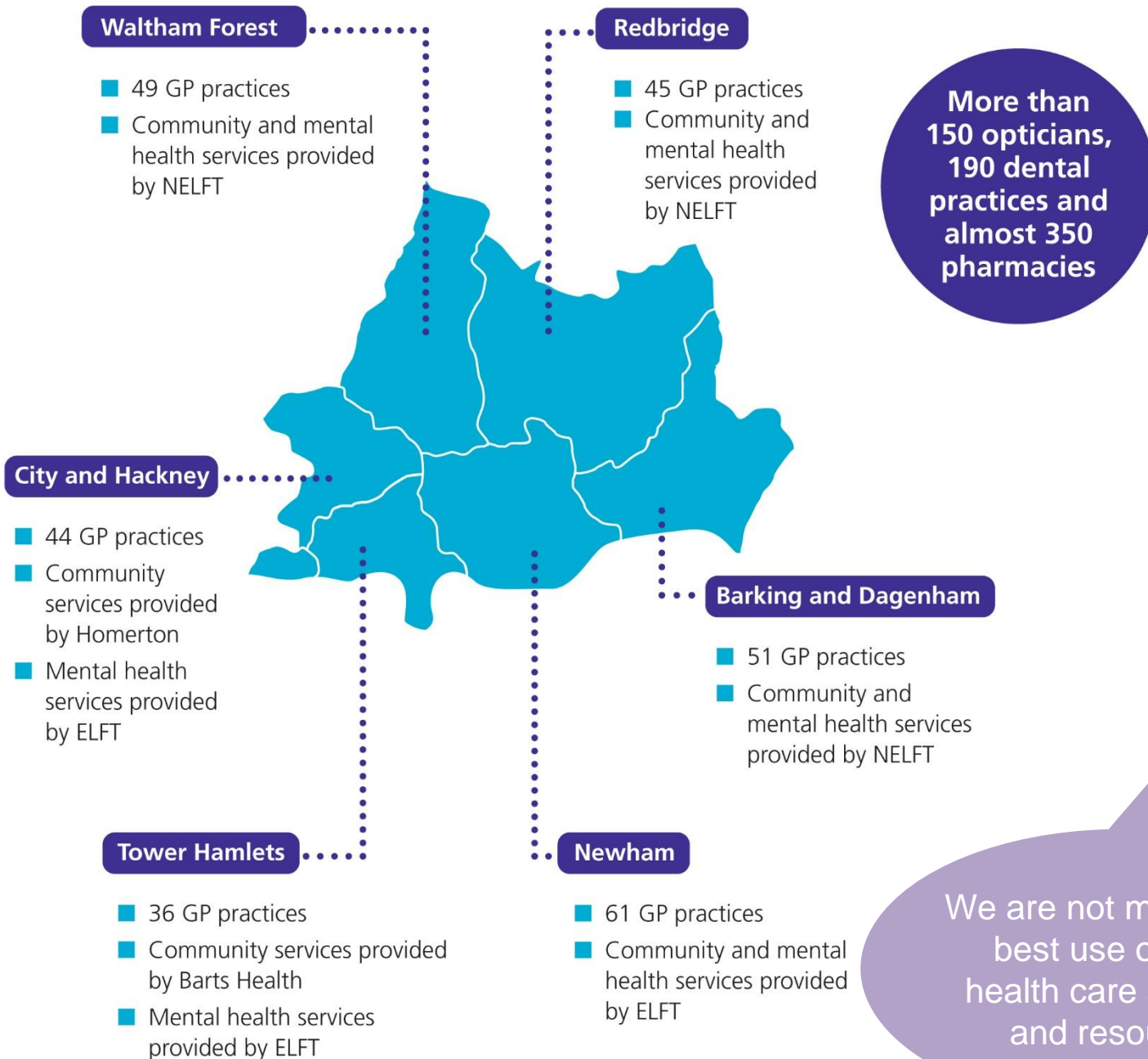
# The organisations involved



# Barts Health and Homerton



# A range of primary, community and mental health services



- Varying degrees of single-handed practices (6-29%)
- Different models of mental health and community service provision
- More than 150 opticians, approximately 190 dental practices and almost 350 pharmacies.

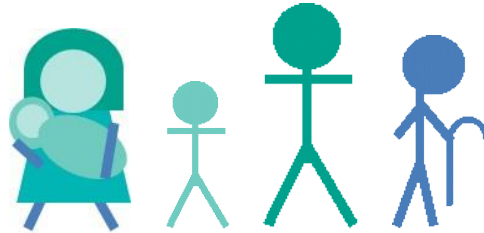
We are not making the best use of local health care services and resources

# Our vision for the NHS in East London

1

## Improves health and prevents need for health services

The NHS working with an active local authority and voluntary sector to improve health, reduce health inequalities and prevent the need for health services



People supported to manage their own health, self-care and use their NHS services appropriately. Back-up by high quality and responsive primary care services

2

## When need arises, ensures **right care, right time, right place**

Rare / dangerous / complex needs best treated by a specialist

Acute episodes of care treated efficiently according to severity / urgency

Long term conditions which are actively managed with patients to reduce the need for unplanned care

Specialised services



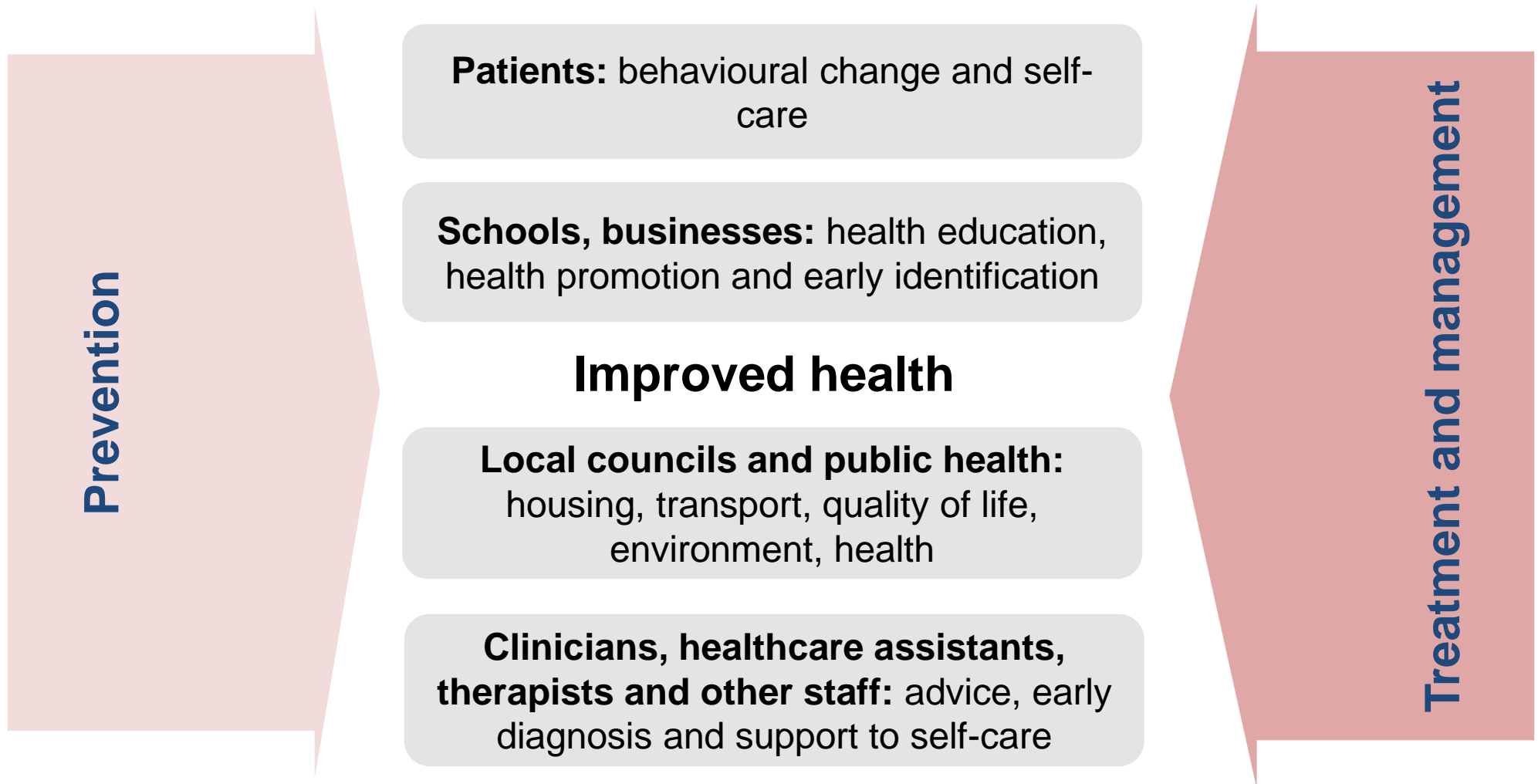
Local hospital services



Enhanced primary and community care services



# Good health, excellent disease management and a speedy recovery if you become ill is everyone's responsibility



# Our work has identified a number of drivers for change ...





## Together we can achieve...

Great health and health outcomes for people in East London, such as:

People supported to manage their long term condition in the community

Patients reporting improvements in their quality of life as a result of health care interventions

More people surviving life threatening events such as stroke, heart attack or major trauma

People supported to die at home where it is their choice to do so

Patients reporting an excellent experience when accessing healthcare

# Transforming Services *Changing Lives*



- Home
- Interim Case for Change
- Background
- Frequently asked questions
- People involved
- Contact



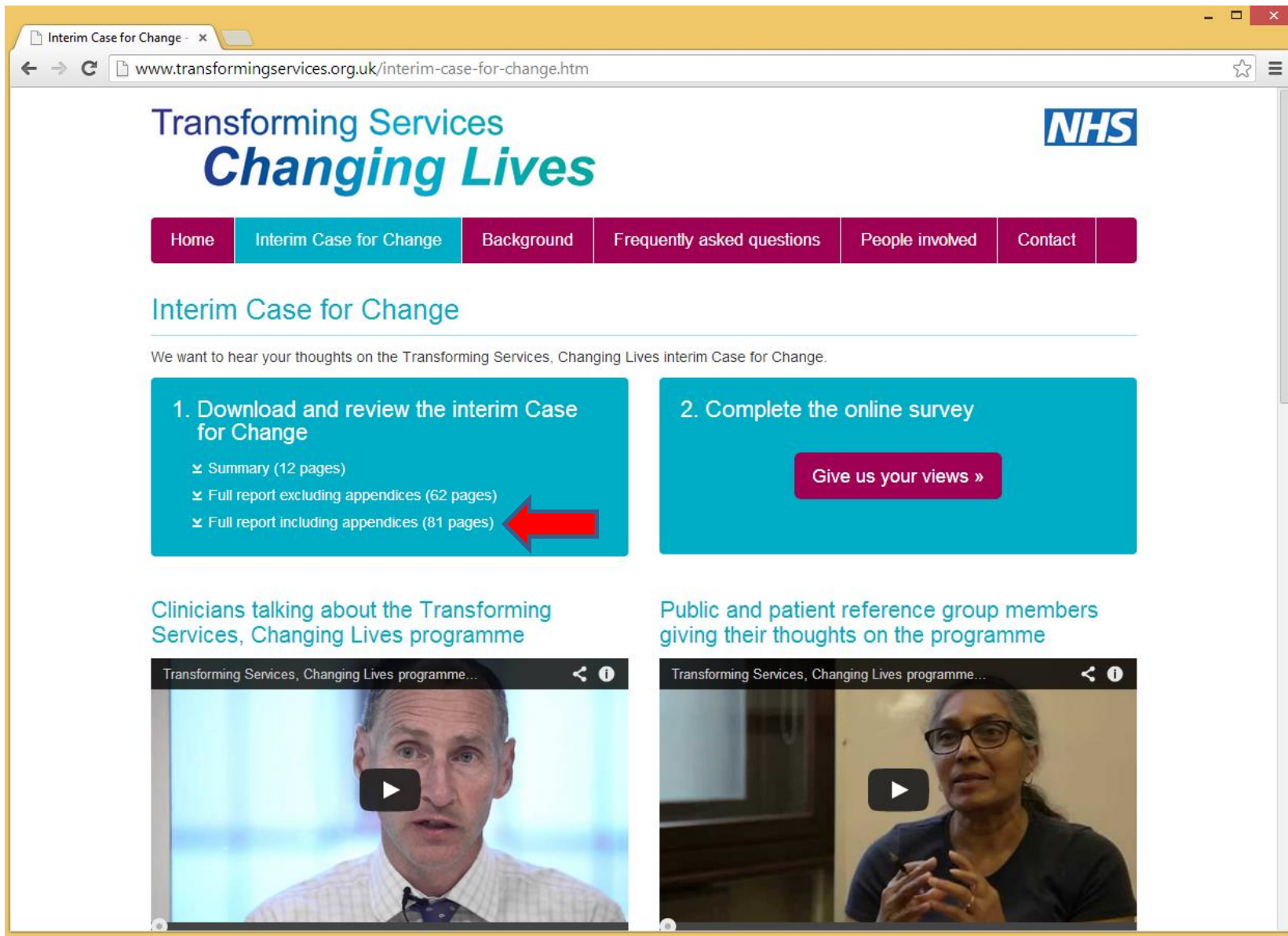
## Help shape the future of east London healthcare services

The Transforming Services, Changing Lives (TSCL) programme is our opportunity to think about what we want our East London NHS services to look like.

Local GPs, surgeons, nurses, patient representatives and public health workers from across East London have all been working together to identify opportunities to improve our healthcare services.

They believe significant change is required in order to create a world-class service. Now we need you to tell us whether you agree so we can start planning for the future.

[Give us your views »](#)



# Transforming Services *Changing Lives*



- Home
- Interim Case for Change**
- Background
- Frequently asked questions
- People involved
- Contact

## Interim Case for Change

We want to hear your thoughts on the Transforming Services, Changing Lives Interim Case for Change.

**1. Download and review the interim Case for Change**

- Summary (12 pages)
- Full report excluding appendices (62 pages)
- Full report including appendices (81 pages)



**2. Complete the online survey**

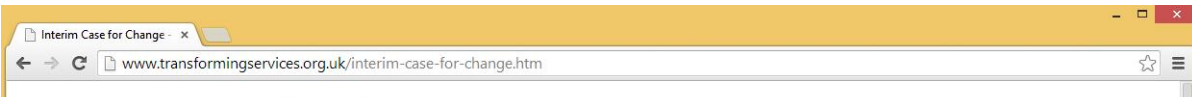
[Give us your views »](#)

### Clinicians talking about the Transforming Services, Changing Lives programme



### Public and patient reference group members giving their thoughts on the programme





## Interim Case for

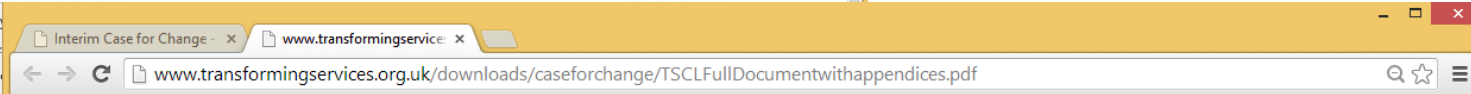
We want to hear your thoughts

### 1. Download and read for Change

- Summary (12 pages)
- Full report excluding a
- Full report including a

Clinicians talking about  
Services, Changing

Transforming Services, Changing



# Transforming Services, Changing Lives

## *The interim Case for Change*


1

### Foreword

We work in East London, one of the most vibrant communities in the world and we feel our population deserves the very best healthcare. This presents many challenges. We have significant deprivation, increasing long term conditions, such as diabetes, population growth and a growing population. There is increasing demand and expectation from patients. Whilst we have examples of excellent healthcare, there are services of variable quality in primary care, in the community and in our hospitals. Recruiting and retaining the skilled workforce we need is not easy and, although we have some of the most modern facilities in the country we also have many older dated facilities. Our organisations face considerable challenges going forward. These need shared action across the whole health and social care system.

The Transforming Services, Changing Lives programme has been established by commissioners and providers to enable us to

Interim Case for Change - x  
www.transformingservices.org.uk/interim-case-for-change.htm



**Appendices to the interim Case for Change**

- ≡ The growing population
- ≡ Health of the population

**Unplanned Care**

- ≡ Unplanned Care - Emerging case for change (summary slides)
- ≡ Unplanned Care - Interim report (summary of clinical working group discussions so far)
- ≡ Unplanned Care - Overview of policy, quality standards and best practice
- ≡ Unplanned Care - Technical data pack

**Maternity and newborn**

- ≡ Maternity and newborn - Emerging Case for Change (summary slides)
- ≡ Maternity and newborn - Interim report (summary of clinical working group discussions so far)
- ≡ Maternity and newborn - Overview of policy, quality standards and best practice

**Children and young people**

- ≡ Children and young people - Emerging case for change (summary slides)
- ≡ Children and young people - Interim report (summary of clinical working group discussions so far)
- ≡ Children and young people - Overview of policy, quality standards and best practice
- ≡ Children and young people - Technical data pack

**Long term conditions**

- ≡ Long term conditions - Emerging case for change (summary slides)

Interim Case for Change - x  
 www.transformingservices.org.uk/interim-case-for-change.htm

Appendices to the  
 ↳ The growing population  
 ↳ Health of the population

Unplanned Care  
 ↳ Unplanned Care - Emerg  
 ↳ Unplanned Care - Interim  
 ↳ Unplanned Care - Overvie  
 ↳ Unplanned Care - Technic

Maternity and newborn  
 ↳ Maternity and newborn - E  
 ↳ Maternity and newborn -  
 ↳ Maternity and newborn - C

Children and young pe  
 ↳ Children and young peopl  
 ↳ Children and young peopl  
 ↳ Children and young peopl  
 ↳ Children and young peopl

Long term conditions  
 ↳ Long term conditions - Em



Interim Case for Change - x www.transformingservice: x  
 www.transformingservices.org.uk/downloads/appendices/up/UP%20Interim%20Report.pdf

*Transforming Services – Changing Lives*

## Contents

<b>1. Introduction.....</b>	<b>3</b>
1.1. Context .....	3
1.2. Purpose of this paper .....	3
<b>2. Where are we now? .....</b>	<b>5</b>
2.1. Local context.....	5
2.2. How is the system currently performing?.....	8
Examples of where things are working well.....	11
<b>3. The emerging case for change .....</b>	<b>13</b>
3.1. Principles for good unplanned care .....	13
3.2. Principle 1: The future model of unscheduled care should work to promote planned care to prevent unplanned contacts where they are avoidable .....	14
What does good look like against this principle? .....	14
What does this mean for patients? .....	14
How is the system currently performing against this principle?.....	14
3.3. Principle 2: The future model of unscheduled care should support people with urgent care needs to get to the right advice, in the right place, first time .....	17
What does good look like against this principle? .....	17
What does this mean for patients? .....	17
How is the system currently performing against this principle?.....	17
3.4. Principle 3: The future model of unscheduled care should ensure that services for urgent, non-life threatening needs are delivered at or as close to home as possible .....	21
What does good look like against this principle? .....	21
What does this mean for patients? .....	21
How is the system currently performing against this principle?.....	21
3.5. Principle 4: Serious or life threatening needs should be treated in services with the best expertise and facilities to reduce risk, and maximise survival and good recovery .....	25
What does good look like against this principle? .....	25
What does this mean for patients? .....	25
How is the system currently performing against this principle?.....	25
3.6. Principle 5: The future model of unscheduled care should be delivered as a connected model of urgent and emergency care .....	27
What does good look like against this principle? .....	27



### **To know more**

If you would like to discuss any elements of this draft case for change, please contact our team on:

Tel: 020 3688 1678

Email: [tscl@nelcsu.nhs.uk](mailto:tscl@nelcsu.nhs.uk)

[www.transformingservices.org.uk](http://www.transformingservices.org.uk)